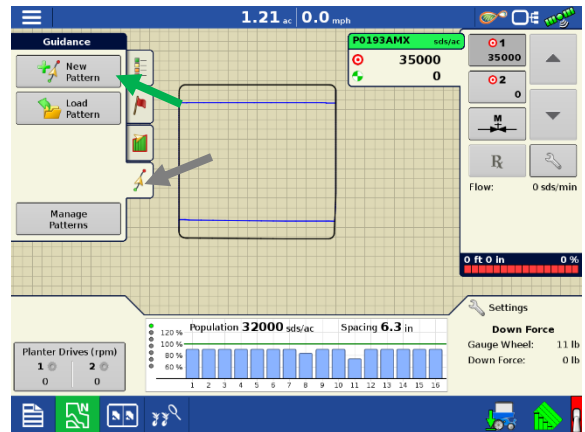
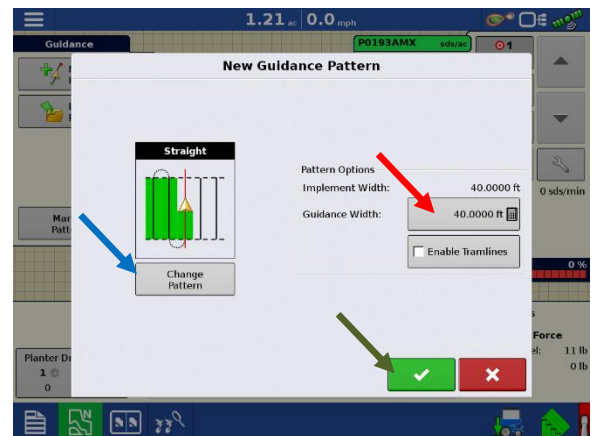


## Setting A Guidance Line

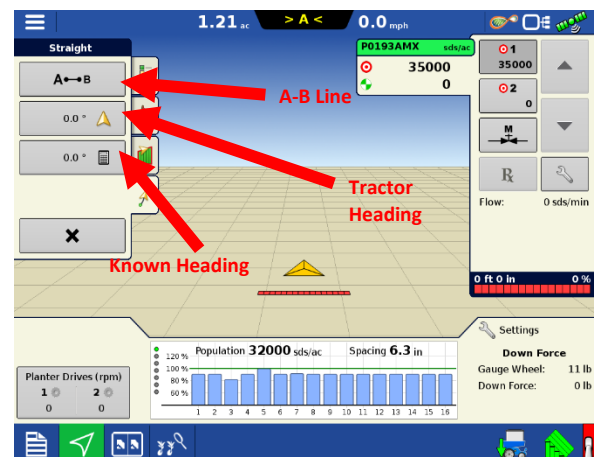
1. From the Run Screen press the **bottom tab on the left menu**. Then press **New Pattern**.



2. Using the **Change Pattern Button**, select the desired guidance pattern. Double check that the proper **Guidance Width** is entered on the right (changes can be made by pressing the **Calculator Button**). Press the **Green Checkmark** to accept your selections.

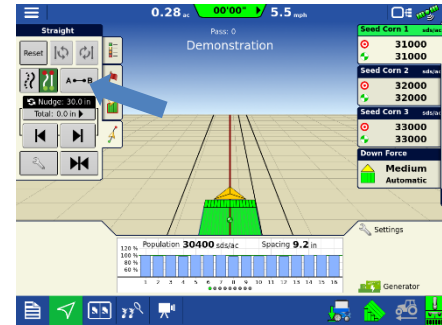


3. Press the **A-B Button** to set your **A Point**, drive the desired distance and press the **A-B Button** again to set the **B Point**. If using an **A+ Degree Heading**, press the middle button with the gold arrow to use the tractor's heading or you can enter a known heading using the **Calculator Button**.

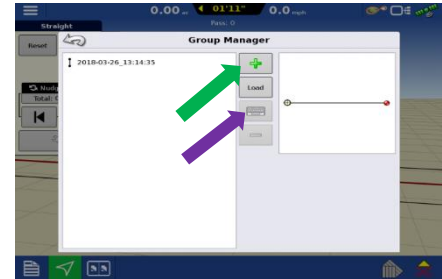


## Adding Multiple Guidance Lines

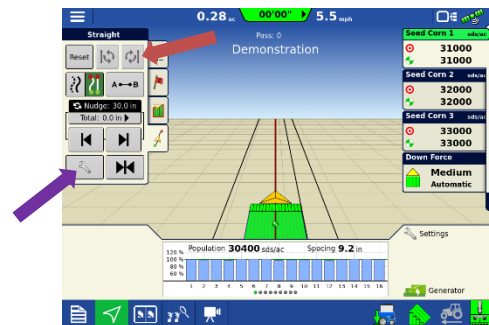
1. Once you have a guidance line created, press the **A-B button** from the Guidance Menu.



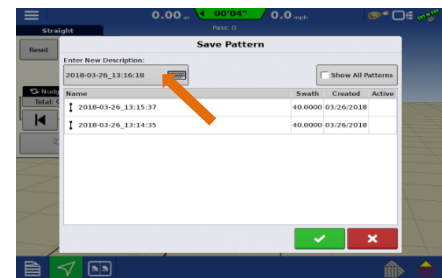
2. Choose the **Green Plus Sign** to add an additional line. Or **Load** to add an existing line. Follow the steps on opposite page to create line. Repeat for up to 20 additional lines. Use the **Keyboard** to name the line something that is easy to remember.



3. Use the **Line Cycle Button** to cycle between lines in the group.



4. To save the group, press the **Wrench** button. Use the **Description** to name the group something that can easily be recalled.



5. To reload the group, press **Load Pattern** option from the **Guidance Menu Tab**.

