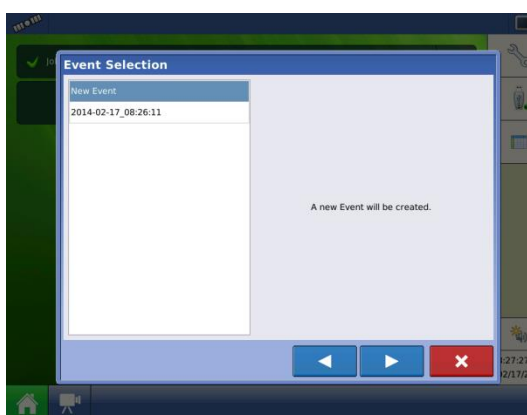
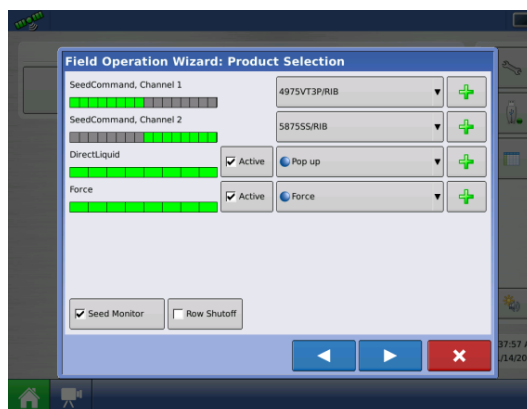
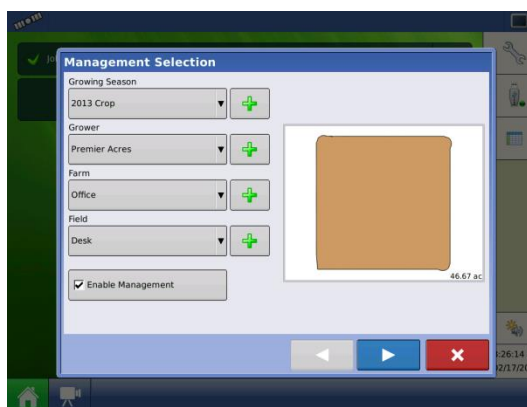
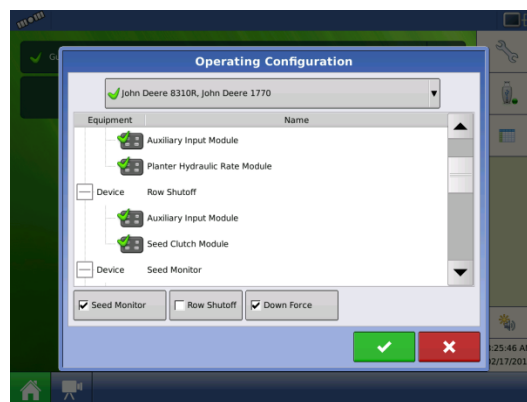


## Starting A Field Operation

1. From the Home Screen, Choose the desired configuration by clicking on the top box and using the drop down menu on the configuration screen.
2. Next, press the **Select Event** button from the home screen. Follow the drop down menus to choose your farm and field, or deselect the **Enable Management** button to use the guidance only mode. Press the **Blue Right Arrow** to continue.
3. Use the drop down menus to select your products (if applicable). Press the **Blue Right Arrow** to proceed, or the left arrow to go back.
4. Choose the proper Event on the event selection page and press the **Blue Right Arrow**. Then choose the proper region and Press the **Green Checkmark** to accept your selections and continue to your operation.

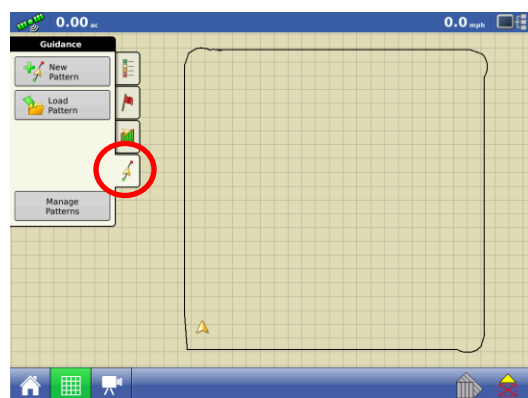


## Setting a Guidance Line

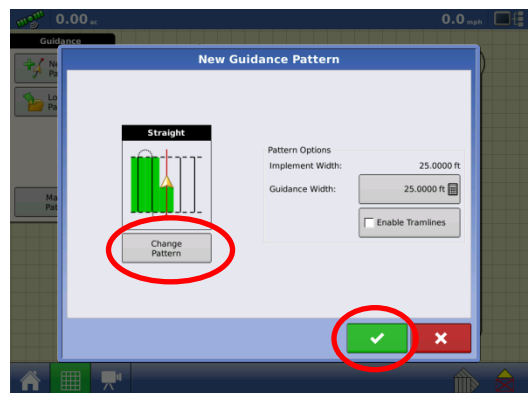
1. From the Home Screen, press the **Map Screen Button** (grid button). Also on the home screen, you can now set target rates, change regions, or change event names.



2. Press the **Guidance Tab** on the left side menu. Then press **New Pattern**.



3. Using the **Change Pattern Button**, select the desired guidance pattern. Double check that the proper **Guidance Width** is entered on the right (changes can be made by pressing the **Calculator Button**). Press the **Green Checkmark** to accept your selections.



4. Press the **A-B Button** to set your **A Point**, drive the desired distance and press the **A-B Button** again to set the **B Point**.

-If using an **A+ Degree Heading**, press the middle button with the gold arrow to use the tractor's heading or you can enter a known heading using the **Calculator Button**.

