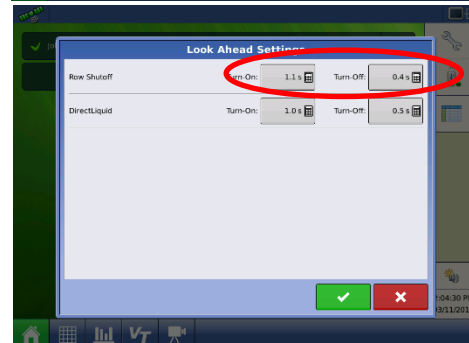
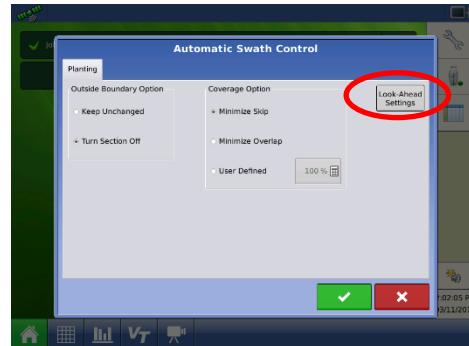
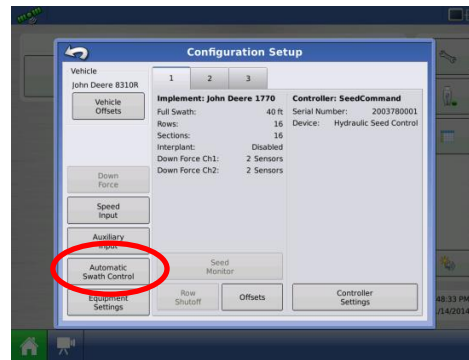
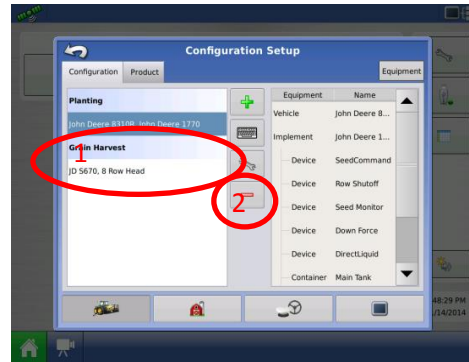
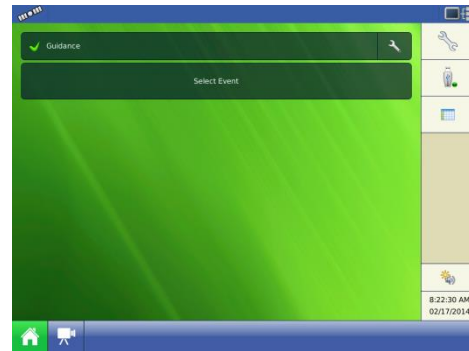


AUTOSWATH ADJUST

1. From the Home Screen press the *Wrench*
2. Click on current configuration to highlight in dark blue (i.e. planter if you are planting), and press on the *Wrench* in the middle of the screen
3. Click on *Automatic Swath Control*.
4. Press the *Look Ahead Settings* Button.
5. You will find a set of Look-Ahead numbers for each controller. Adjust desired number per instructions on **AutoSwath** cheat sheet. Press the *Green Checkmark* to save.



Changing Products

- From the **Home Screen** press and highlight one of the products listed under the **Products** tab. This will take you to the product selection menu.
- Using the drop down menus on the right, select the product you wish to change and choose the desired product. Press the **Blue Right Arrow** to continue. Review your choices and press the **Green Checkmark** to save.
- From the **Home Screen** you can also press on the green and white circle icon. This will take you to the **Rate Control Settings** page. From here you can change the target rates on selected products and add prescriptions.
- Pressing the **Containers** tab allows you to monitor and reset tank levels for DirectCommand operations. The **Rate Control Settings** screens are also accessible from the **Run Screen** via the rates tab on the right of the screen.

