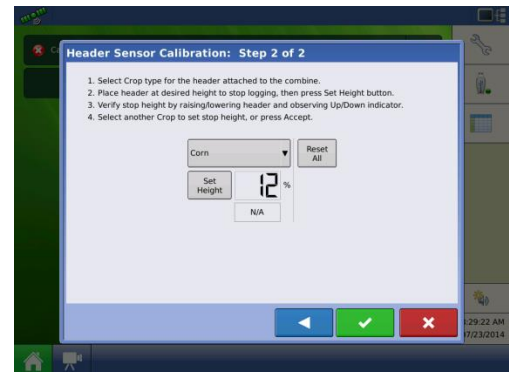
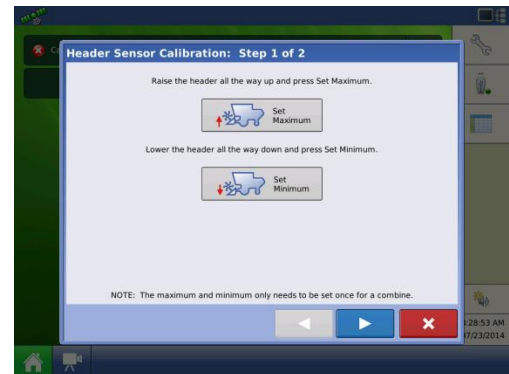
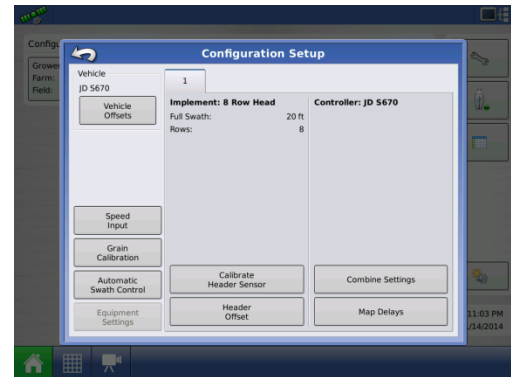
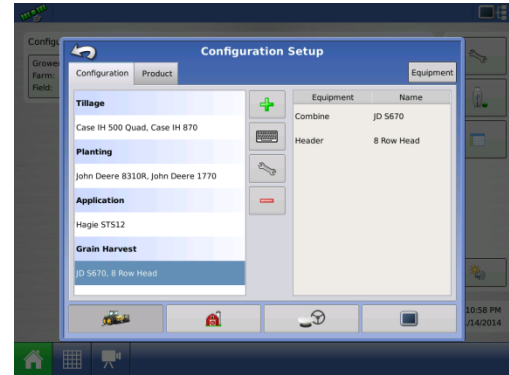


Initial Harvest Calibrations

Header Height

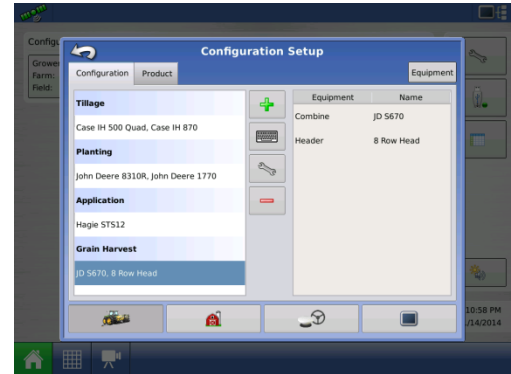
- From the Home Screen, press the *Wrench*. Highlight the harvest configuration and press the *Wrench* in the middle of the screen.
- Press *Calibrate Header Sensor*. Thoroughly read the instructions and press the *blue right arrow*.
- Raise the header all the way up, press *Set Max*. Next, lower the header all the way down, press *Set Min*. This only needs to be completed once per combine. Press the *blue right arrow* to continue.
- Select Crop. Raise or lower header to desired harvest height and press *Set Height*. Repeat for all crops.

Stop Height Values:
Corn: _____%
Soybeans: _____%
Other: _____%
- Press the *Green Checkmark* to complete the calibration.

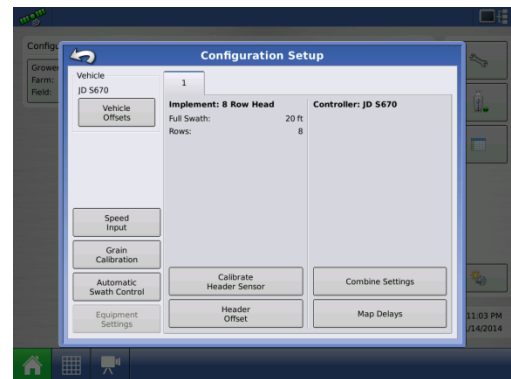


Initial Harvest Calibrations Ground Speed

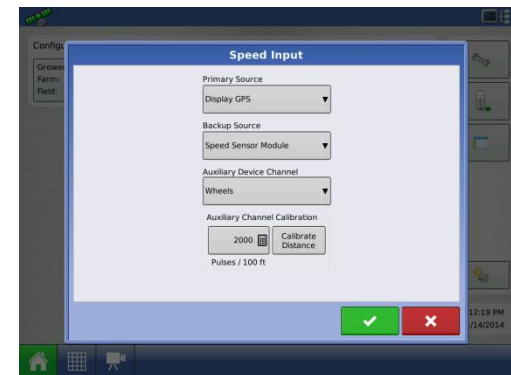
1. From the Home Screen, press the *Wrench*. Highlight the harvest configuration and press the *Wrench* in the middle of the screen.



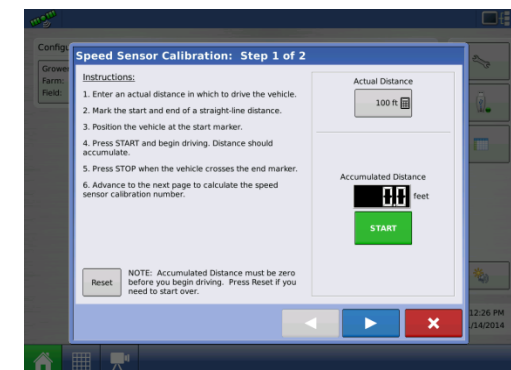
2. Press *Speed Input*.



3. Press *Calibrate Distance*.

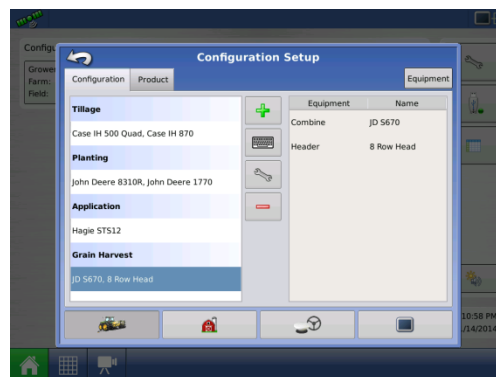


4. Measure and mark out a distance greater than 100 ft., 300ft recommended. Change "Actual Distance" to match measured distance. Press **START** and begin driving marked distance. At the end of the track, press **STOP**. Press the **right arrow**, then the **Green Checkmark** to complete calibration.

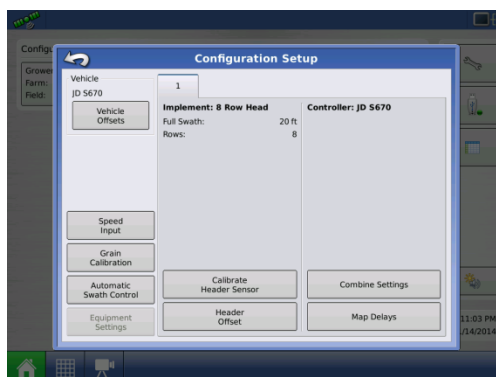


Initial Harvest Calibrations Vibration

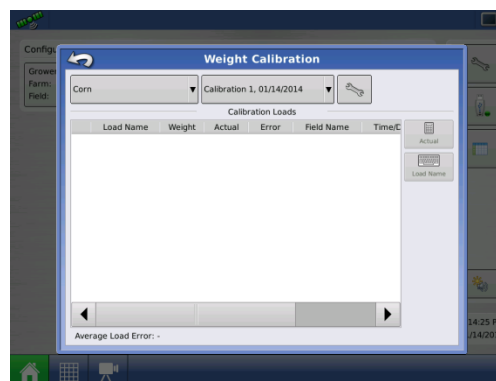
1. With a Field Operation Started, go to the Home Screen, Press the *Wrench*. Highlight the harvest configuration and press the *Wrench* in the middle of the screen.



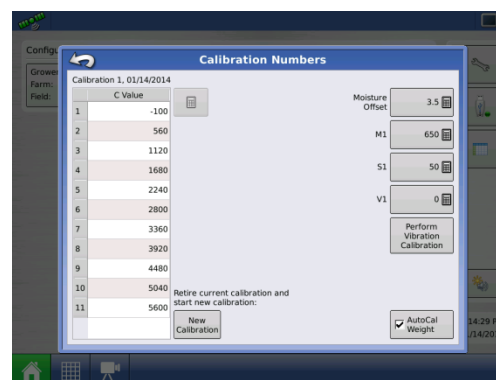
2. Press *Grain Calibration*.



3. Press the *Wrench* at the top of the box.



4. Press the *Perform Vibration Calibration* button. Read the instructions thoroughly.



Initial Harvest Calibrations

Vibration (Continued)

- With the separator and header engaged, increase engine speed to full throttle and press **START**.
- After timer expires, the system will make calculations and will inform you when calibration is completed. Throttle down and disengage. Press the **Green Checkmark** to complete calibration.



Initial Harvest Calibrations

Temperature

- From the run screen, press the **Moisture button** in the bottom left of the screen.
- Press the **Temperature** tab. Adjust the offset, using the arrows, so that the calibrated temperature matches the ambient air temperature. Press the **Green Checkmark** to complete calibration.

NOTE: The temperature calibration should be performed in the early morning (or shade) before the combine has been running, to avoid head from the machine affecting the reading. This calibration only needs to be completed once per season.

