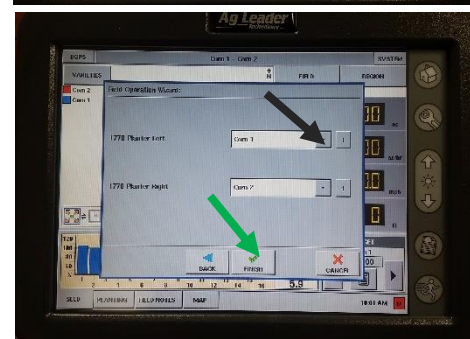
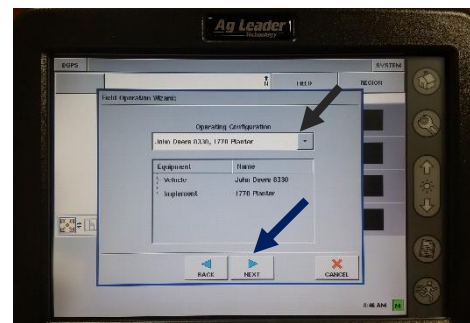
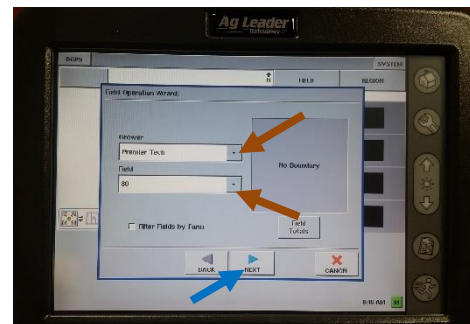
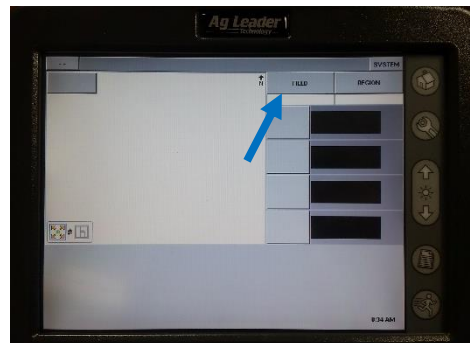
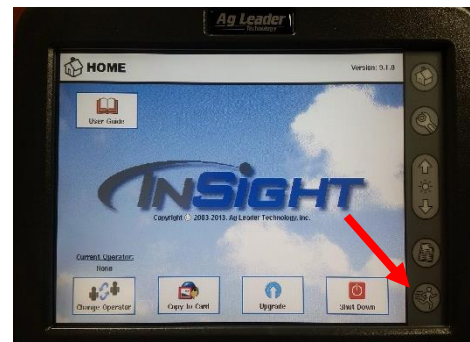


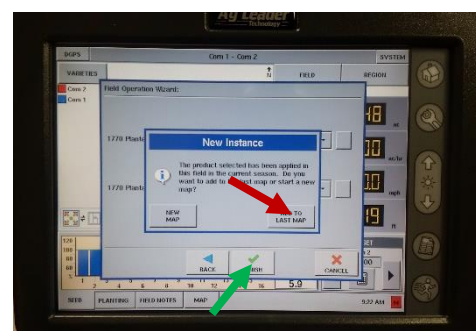
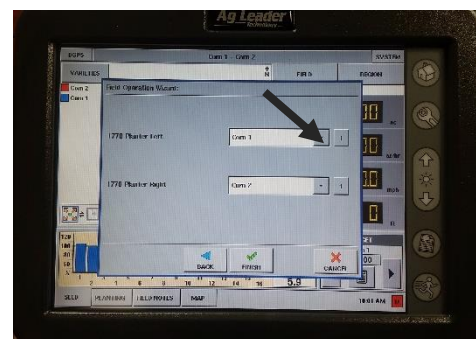
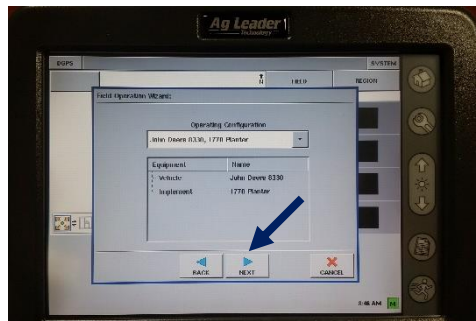
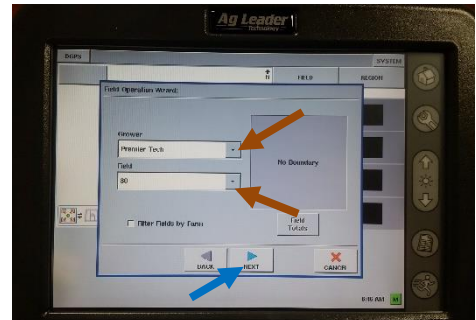
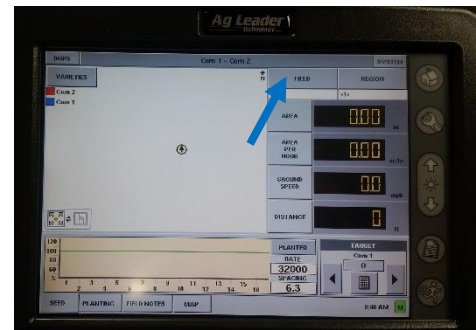
## Starting A Field Operation

- From any screen, press the **Running Man** button.
- Press the **Field** button.
- Choose **Grower** and **Field**. Press the **Next Arrow** to continue.
- Use the **Drop Down** menu to choose your current equipment configuration. Press the **Next Arrow** to continue.
- Use the **Drop Down** menu to choose the current product. Press the **Green Checkmark** to finish the selection and accept the region.



## Changing Fields and Products

1. Press the **Field** button.
2. If you are changing fields, choose the proper **Grower** and **Field**, or leave the current selection. Press the **Next Arrow** to continue.
3. Check to make sure operation configuration matched current equipment. Press the **Next Arrow** to continue.
4. Use the **Drop Down** menu to choose the current product.
5. Select **"Add to Last Map"** on pop up message. Press the **Green Checkmark** to finish the selection and accept the region.



## Adjusting AutoSwath

1. With a Field Operation Started, press the **Wrench**. Press the **Planting/Seeding Button**.
2. **Highlight the configuration** you wish to adjust by pressing on the name. Press the **Automatic Swath Control** button.
3. Use the **Calculator** buttons next to “Turn-On” and “Turn-Off” Look Ahead to adjust the numbers based on the cheat sheet.
4. Press **Accept** to accept changes and again to continue. Press the **Running Man** to continue to the field.

