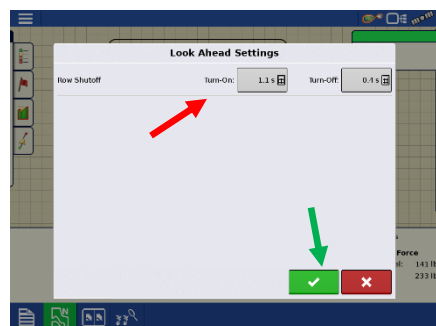
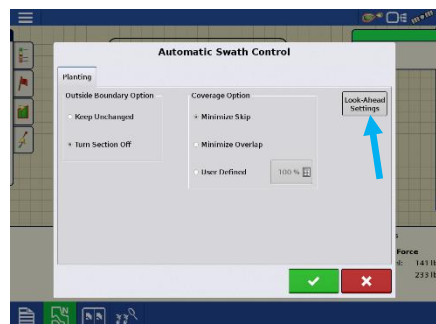
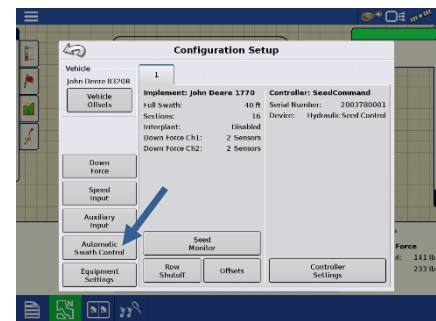
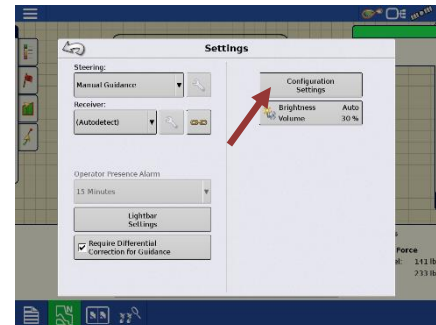
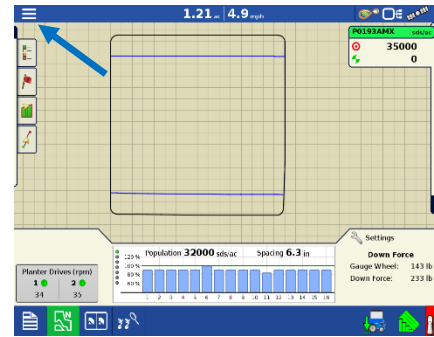


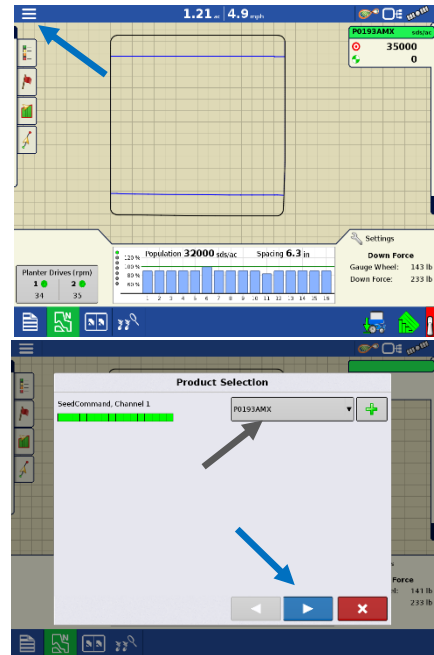
AUTOSWATH ADJUST

1. From the Run Screen press the **Menu**, then **Settings**.
2. Click on **Configuration Settings**
3. Click on **Automatic Swath Control**
4. Click on **Look-Ahead Settings**.
5. Change **Look-Ahead numbers** per instructions on AutoSwath cheat sheet. Press the **Green Checkmark** to save.



Changing Products

1. From the Run Screen press the **Menu**, then **Product**.
2. Using the **drop down menus** on the right, select the product you wish to change and choose the desired product. Press the **Blue Right Arrow** to continue. Review your choices and press the **Green Checkmark** to save.



Changing Fields

1. From the Run Screen press the **Menu**, then **Field**.
2. Choose your field from the **drop down menus**, or press the **green plus** to add a new name. Press the **blue right arrow** to continue.
3. Choose your product or press the **green plus** to add a new product. Press the **blue right arrow** to continue.
4. Start new event or continue a previous by highlighting either option. Press the **blue right arrow** to continue. Press the **Green Checkmark** to accept.

